

The Steps to Uninstall MarvellTray (MSU) within Mac 10.13.x OS

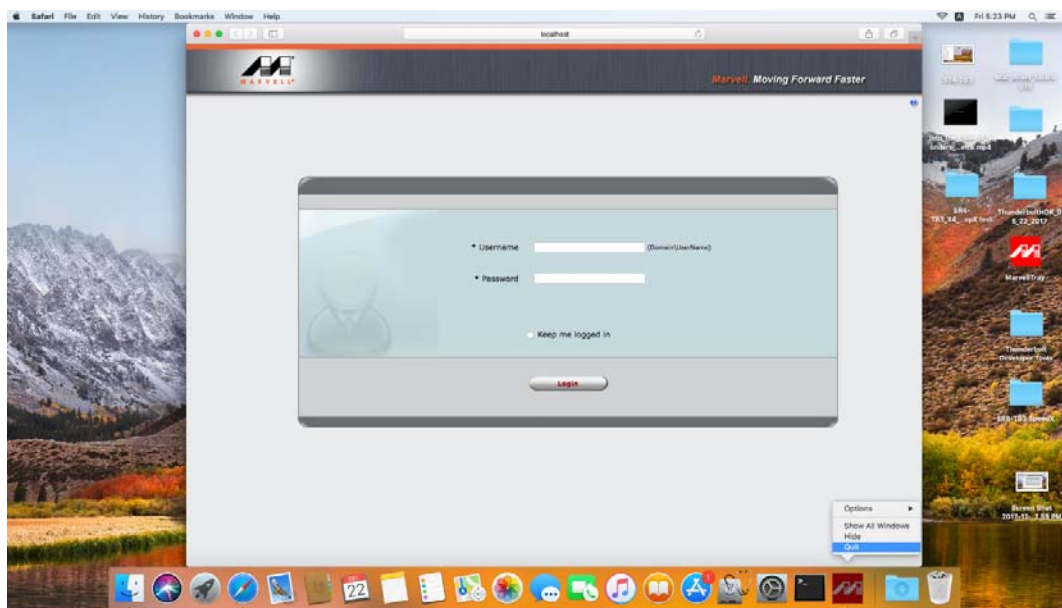
Introduction:

In order to successfully install your new MarvellTray (called MSU) version, it is a **MUST** for you to uninstall (delete) your old version first!

Note: According to the new restriction from the new Mac OS 10.13.x, user will have to first uninstall the old MSU version right before installing its new version.

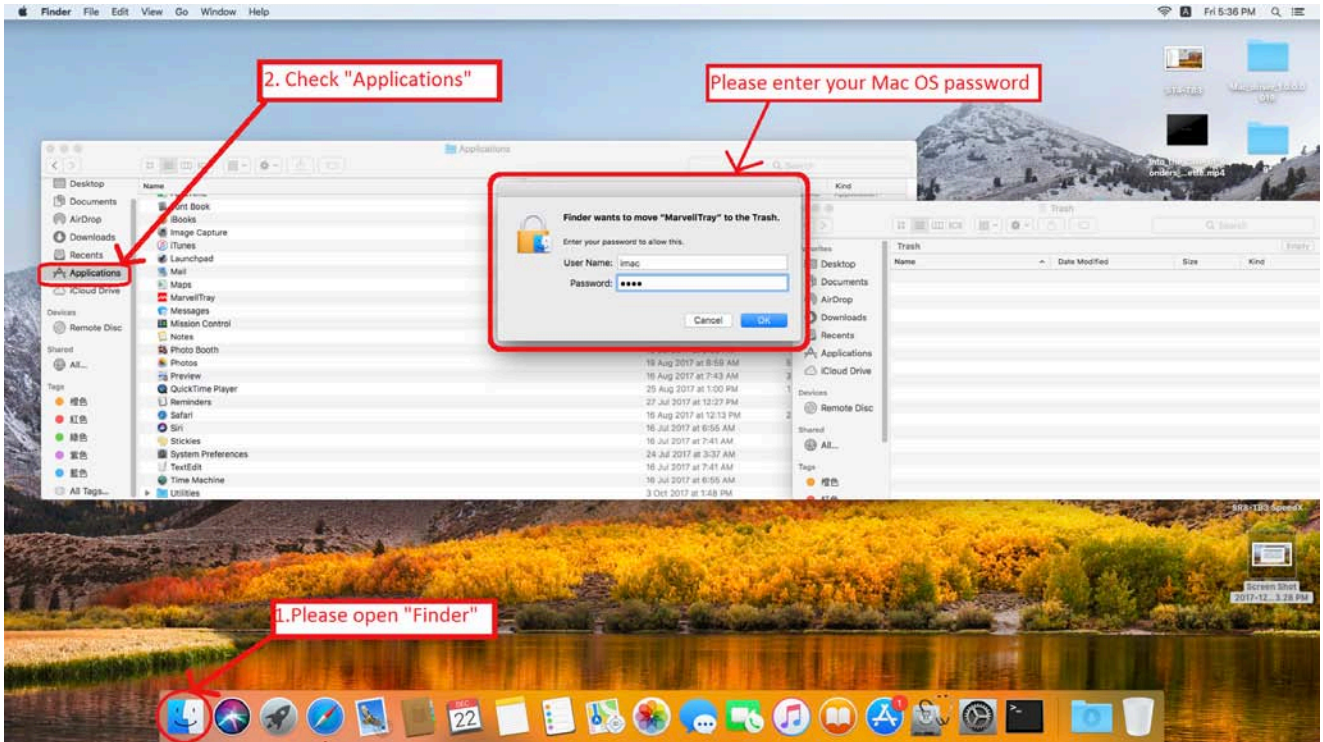
The Steps to uninstall the old MSU version:

Step-I: Please first logout your MSU.

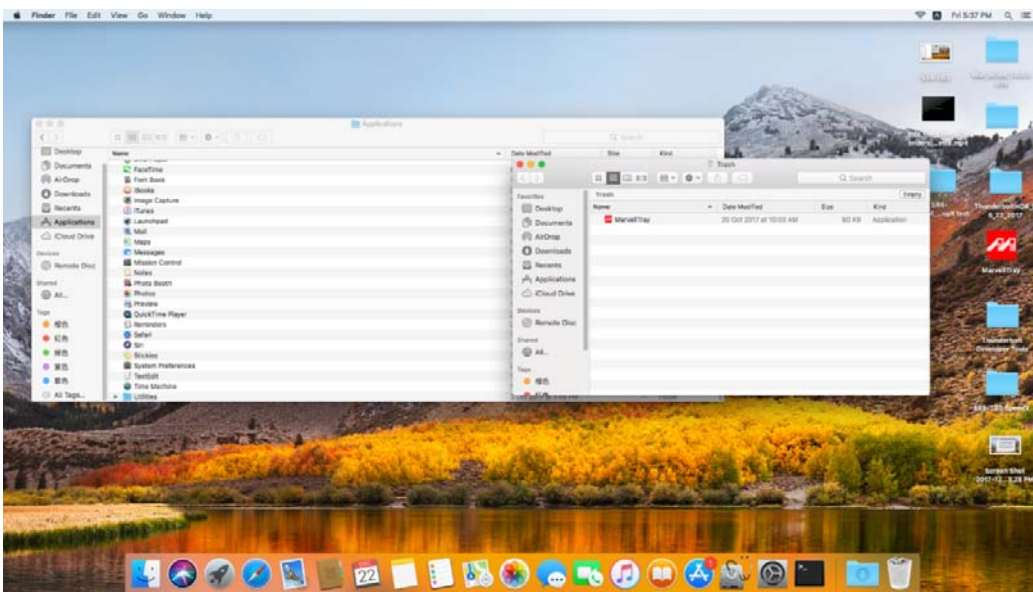


Step-II: Please click “Finder”, click “Applications”, and then move MSU to the “Trash”.

Note: While seeing “Finder wants to move MSU to the Trash” from a small popped-out screen, please enter your Mac OS Password, and then select “OK”.



Step-III: While clicking “OK”, the old MSU will be removed away from Applications.



Step-IV: You could start loading your new MSU version now.