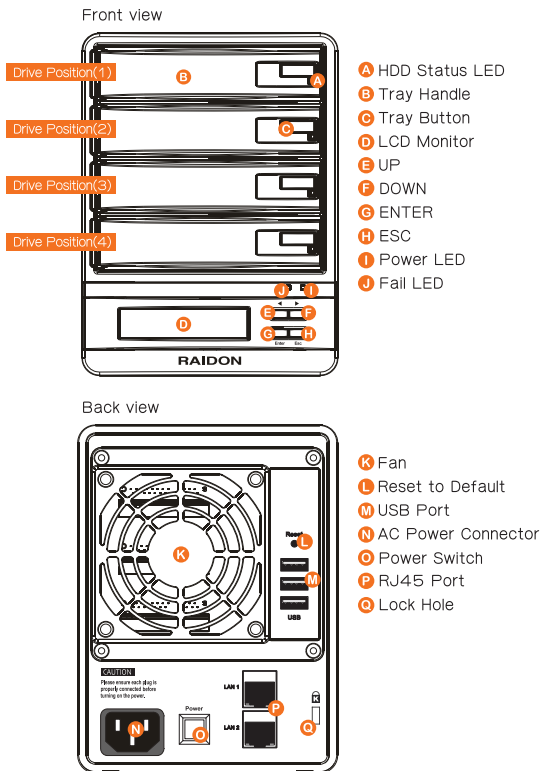


# RAIDON

## SL5640-LB2 Quick Installation Guide

### Package Contents and Product Views



v1.1(Mar.2013)

1



- ※ After the Gigabit LAN port is connected to a Gigabit LAN, the light indicator to the left turns a steady green while the one to the right turns orange.
- ※ Press and hold the Reset key for 5 seconds to reset the system back to the factory default setting after your system is in ready status.
- ※ SL5640 dual Gigabit LAN Port, mainly as a Hub functions as a network expansion interface, a network device can be connected through the SL5640.
- ※ Do not connect two Gigabit LAN at the same time, this will result in the SL5640 unable to connect to the network, select one Gigabit LAN Port can use.

### Initial Setup

If you are the first time to use SL5640, please read the following instructions steps.

Your SL5640 product employs a GUI for system management and setup. It takes about 1~2 minutes for your SL5640 to start up. Your SL5640 cannot be discovered by your system before it has been started.

When LAN connection established and powered on, device will start up with beeping sounds with power light steady-on and after 10 seconds device will beep again with LCM brighten up for entering the booting progress. About 1~2 minutes, device will give 5 short beeps and IP address will be identified from the LCM for the success booting up.



#### Step 1: Open your browser and enter the IP address

(a) To use auto IP (IP address assigned by the DHCP server):

After being connected to a local area network and powered on, the LCM displays the assigned IP address. Open your browser and type the IP address to enter the Web GUI for setup.

You may use an IP detection utility (e.g., the SearchNAS.exe includes a CD with operating instructions contained in Appendix D) to search for the IP address assigned to SL5640.

2

(b) To use static IP:

If there is no DHCP server to assign IP, SL5640 product has a default IP address of 192.168.1.20. Please change the IP address of the PC connected with your product to be in the same network segment (e.g., 192.168.1.xxx) before opening your browser. Type in the default IP address to enter the Web GUI for setup and change the IP address of the SL5640.



The SearchNAS.exe software contained in the CD supports the Windows system only.

#### Step 2. Enter the login screen

The login screen will be displayed after the IP address has been entered. Enter your account, password and verification code to go to the setup screen.

Default account and password

User name: admin

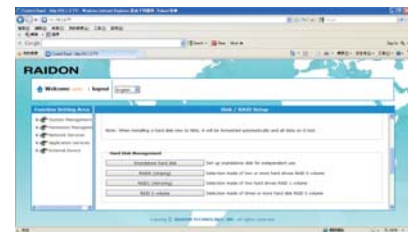
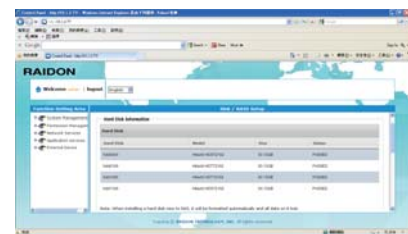
Password: admin



#### Step 3

When using your SL5640 product for the first time, you are required to select one standalone hard disk or create one disk array before doing other setup operations. Click on the Hard disk/RAID Setup in the System Management to display the list of hard disks existing in the SL5640. Click on one of the four options in the Hard Disk Management to set up the desired disk array. Once the disk array is created in the system reboot, you can then make another setup after logging in the system again. See the operating instructions contained in attached CD.

3



### Light indicator

Status	Light indicator
Power on/standby	Power light turns blue
Data access	HDD light flashes blue
Fan failure	Failure light turns red
Overheat (System temperature above 55°C or CPU temperature above 85°C)	Failure light turns red
Hard disk failure	HDD light turns red
Rebuilding	HDD light flashes blue

Thank you for choosing product from RAIDON Technology Inc. This information in the manual has been thoroughly checked before publication, but may not conform to the product actually delivered which mean actual product specifications depend on the product shipped to you. Any update in the specifications or product-related information shall not be subject to further notice but for the latest information on the product, please visit the website as [www.RAIDON.com.tw](http://www.RAIDON.com.tw) or contact us at [supporting@raidon.com.tw](mailto:supporting@raidon.com.tw), and we will get back to you as soon as possible.

Copyright © RAIDON TECHNOLOGY, INC. All rights reserved.

4