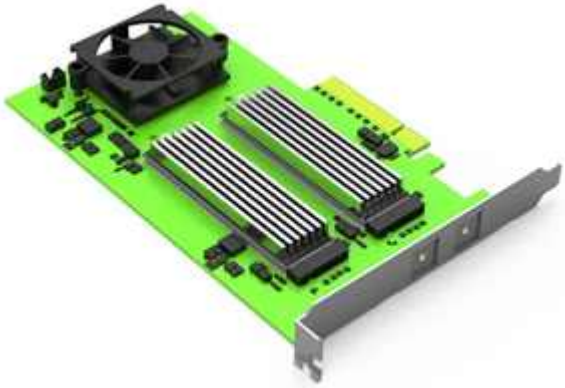
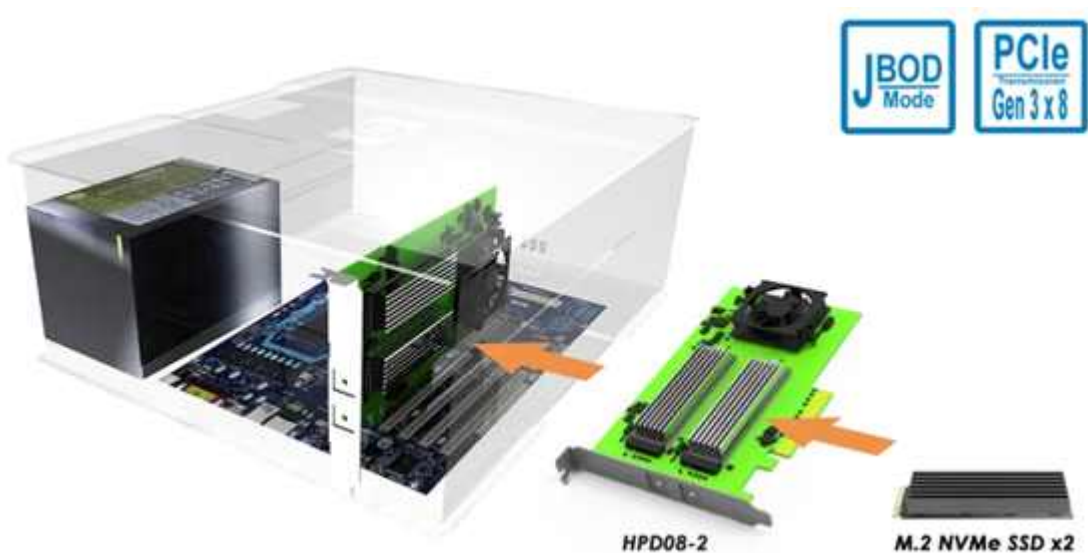


Raidon HPD08-2 PCIe 3.0/4.0 HBA Featuring Dual M.2 NVMe SSD Support with 80Gb/s Bandwidth
Supports dual-channel mastery allowing for simultaneous data transfers.

[Raidon Technology Inc.](#) announces the [HPD08-2 HBA](#) featuring dual M2 NVMe SSD support with 80Gb/s bandwidth



The HPD08-2 HBA boasts fast data transfer speeds of up to 80Gb/s. This adapter harnesses the power of the PCIe Gen-3 switch. It's not just about speed, it's about versatility.



With features like HBA support and compatibility with dual M.2 NVMe SSDs, it bridges the gap between the present and future, supporting both PCI e 3.0 and 4.0 interfaces. What's more, its hassle-free, driver-free setup makes it a breeze to integrate into any system. Designed to blend with multiple OSs, it is more than just a component - it's an ally for any tech aficionado looking to elevate their computing experience.



The HPD08-2 is a multitasker, adept at handling everything from the most demanding data-heavy applications to

your day-to-day computing needs. It's the match whether you're a professional in search of top-tier storage performance or a casual user seeking a dependable device. In every scenario, the HPD08-2 stands out as a stellar choice.

The features are as the followings:

- Features a PCIe Gen-3 switch that delivers 80Gb/s bandwidth
- Supports dual-channel mastery that allowing for simultaneous data transfers
- Provides universal wide-ranging OS compatibility that makes it versatile
- High-octane storage solutions: Supporting Dual M.2 NVMe SSDs
- Hassle-free installation with drive free setup
- Provides quiet 4cm fan to stay cool under pressure with the HPD08-2's efficient cooling system

Click to enlarge



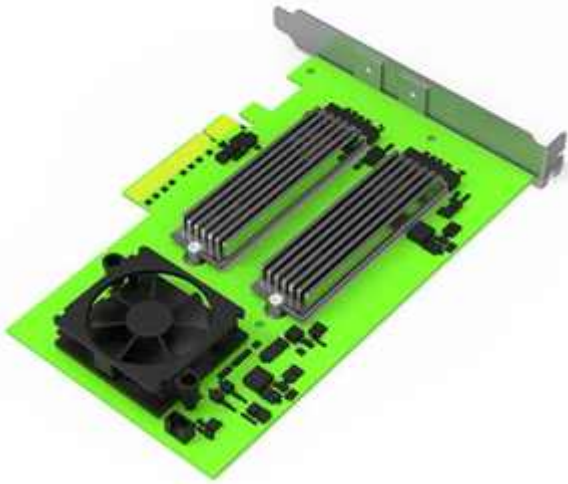
The high bandwidth and efficient data transfer capabilities of the HPD08-2 make it a candidate for supporting the intensive workloads associated with AI applications.

Here are possible its AI-related applications:

- **ML workstations:** For data scientists and AI researchers, the high-speed data transfer capabilities can reduce the time required for data preprocessing and model training.
- **AI data centers:** In data centers focused on AI workloads, the HBA can facilitate faster data access and improve the efficiency of neural network training and inference tasks.

Other applications are also can be used in fields, such as:

- Autonomous vehicle
- Development, medical imaging analysis, natural language processing (NLP), video
- Surveillance analysis, AI-enhanced content creation, financial modeling, and
- Analysis and edge computing.



Specification

Model No	HPD08-2
Interfaces	PCIe 3.0/4.0
Compatible Drive	2 x M.2 NVMe SSD (size: 2280, height below 10mm including heat sink)
Certification	CE/FCC
Storage Mode	JBOD - Independent Mode
Dimension	102.8 mm (H) x 163 mm (L)
Operating System Support	Windows 7 or above, macOS 10.10 or above, Linux
Package Accessories	* HPD08-2 x 1 * Quick Installation Guide