

## Raidon Technology Introduces IR2026 Dual-Drive Internal RAID-0/1 Module

Supporting 2x2.5-inch SATA 3 (6Gb) SSDs or HDDs in standard 5.25-inch drive bay

[Raidon Technology, Inc.](#) announces the [IR2026 internal RAID module](#), a compact, high-performance internal RAID module purpose-built for space-constrained industrial systems.



Designed to fit a standard 5.25-inch drive bay, it transforms a single slot into a dual-drive RAID array supporting 2x2.5-inch SATA 3 (6Gb) SSDs or HDDs, with configurable RAID-0 or 1 for either maximum throughput or mirrored data protection.



Engineered for 24/7 operation in IPCs, servers, and professional workstations, the iR2026 prioritizes uptime and serviceability with front-access drive maintenance, real-time status indicators, and platform-proven reliability.

**Advanced safeguards include GUI-based monitoring, key-lock security, silent active cooling, and overheat alarm protection** – hallmarks of the company's trusted 5.25-inch dual-bay RAID architecture.



### Space-Saving Design:

Fits 2x2.5" SATA HDD/SSDs (9.5mm or 7mm height) into a single standard 5.25" drive bay.

### Hardware RAID Performance:



Selectable **RAID-0** for high-speed striping or **RAID-1** for automated mirroring and data protection.

### Optimized Single-Port Connectivity:



Effectively manages 2 drives through a **single SATA 7-pin host connector**. This hardware RAID design saves motherboard ports and reduces cable clutter while sustaining **high throughput over a SATA 3 (6Gb/s) host link** for SSD/HDD workloads.

### Advanced Monitoring:



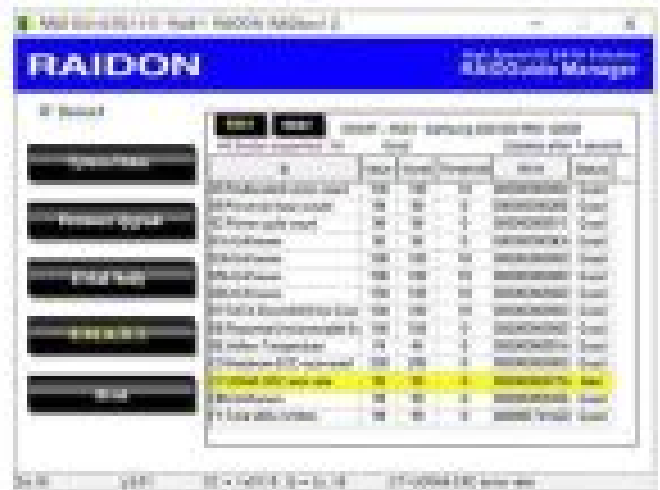
### LED Indicators



RS232 Port

- **RS232 Port:** Allows custom software integration for drive status monitoring
- **LED Indicators:** Visual status for drive activity and health

Click to enlarge



- **STATUSGUARD GUI:** Dedicated Windows software for real-time drive S.M.A.R.T. monitoring

### Reliable Cooling and Durability:



Rugged metal housing with a built-in **40mm silent cooling fan** ensures optimal operating temperatures.

### Secure and Easy Maintenance:



- **Hot-Swappable Trays:** Replace drives without powering down the system
- **Key-Lock Mechanism:** Prevents unauthorized physical access to drives
- **Overheat Alarm:** Audible buzzer with a mute button for immediate system warnings

#### Benefits :

- **Maximized Space Efficiency**  
In industrial and server environments where internal space is at a premium, the iR2026 allows you to double your drive density without requiring additional mounting brackets. Its short depth (**138mm**) ensures compatibility with almost any chassis, including compact IPC cases
- **Business Continuity and Data Security**  
System downtime is costly. By configuring the iR2026 in **RAID-1**, you create an instant real-time backup. If one drive fails, your system continues to run seamlessly, and the hot-swap capability allows you to replace the faulty drive without interruption
- **Industrial-Grade Reliability**  
Built for 24/7 operation, the rugged metal construction and active cooling fan protect your drives from heat and physical stress. The addition of the **RS232 signaling** port makes it a perfect fit for automated factory systems that require remote health monitoring

#### Applications

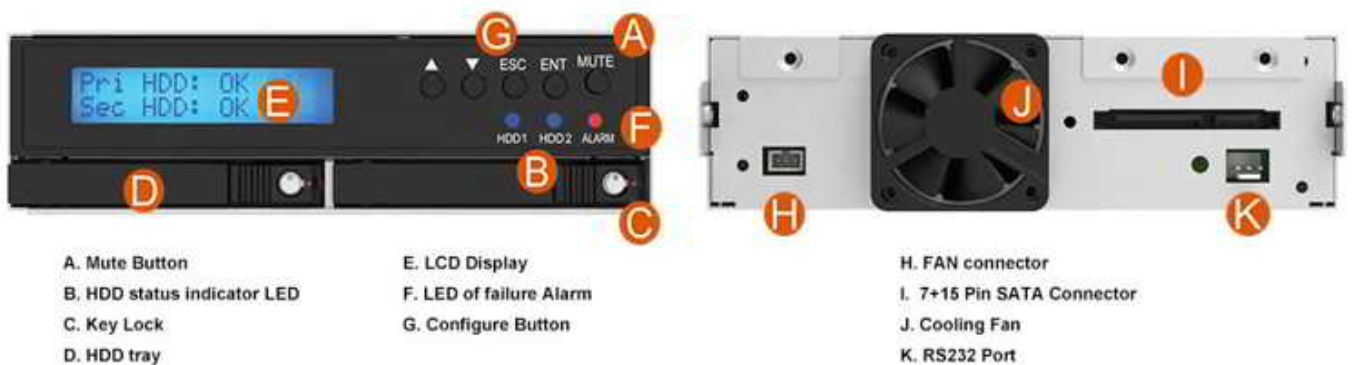
The iR2026 is versatile but excels in environments requiring durability and data safety:



- **Industrial Automation (IPC):** Ideal for factory floor controllers where vibration resistance and data redundancy are critical. The compact size fits easily into control cabinets
- **Surveillance and DVR:** Use RAID-1 to ensure that critical footage is never lost due to a single drive failure



- **SMB Servers and Workstations:** A perfect boot-drive solution. Run your OS in RAID-1 to ensure the server stays online even if a boot drive crashes
- **Embedded Systems:** The RS232 monitoring capability allows for integration into ‘headless’ systems where no monitor is attached



**Specs:**

Model No	iR2026
Interfaces	Host Interface (to system): 1×SATA 3 (6Gb/s) Drive Interface (internal): 2×SATA 3 (6Gb/s)
Compatible Drives	2×2.5" SATA 3 (6Gb/s) HDD/SSD (Under 9.5mm height)

<b>Storage Level</b>	RAID-1 , 0
<b>System Monitoring</b>	Fan Failure / Overheat
<b>Operating System</b>	Windows, Linux
<b>Function Control Interface</b>	Panel RAID Mode Button Setting
<b>Graphical User Interface (GUI)</b>	Windows Only
<b>Cooling System</b>	4 cm Low noise fan
<b>Dimension and Weight</b>	146(W)x 42(H) x 138 (L) mm
<b>Package Accessories</b>	*iR2026 *SATA Cable *Accessory Kits *Quick installation guide

**Resource :**

[Frequently Asked Questions \(FAQ\) on iR2026](#)